

University of Arizona School of Music
Large Ensemble Auditions 2025-2026
Euphonium

This packet contains the large ensemble audition materials for the coming year. If you are a non-music major auditioning for ensembles, you may be asked to play only the first two excerpts. Otherwise, be prepared to play everything in the packet that is indicated with brackets or "START/STOP". Some excerpts already have tempo markings, others will require you to do some research on the piece to determine the appropriate tempo and style. If you have any questions, please do not hesitate to ask. Good luck! tropman@arizona.edu

Note! All of these are in bass clef. If you have difficulty reading bass clef, make sure to allow sufficient preparation time!

Euphonium excerpts:

1. Kopprasch etude No 3 NO REPEATS
2. B. Horne etude No 1 from indicated "START" to "STOP" markings
3. W. Schumann *George Washington Bridge* m.49 – m.74 as marked
4. A. Sullivan *Pineapple Poll Suite* mvt. 1 – indicated brackets only

PLAY #3 - NO REPEATS

Nº 3. Poco Allegro.

p sempre staccato. *f*

p *cresc.*

f *f*

p

f

p

NOTE:- Exercises marked thus * should be practised in the various ways indicated.

1. 2. 3. 4.

* Nº 4. Allegro.

sempre staccato.

p

f

Euphonium

Etude No. 1

START HERE

$\text{♩} = 84$

mp

7

12 *rit.*

f

16 *p* **S** **T** **O** **P** *piu mosso*

20

24 *f* *rit.* 3 3

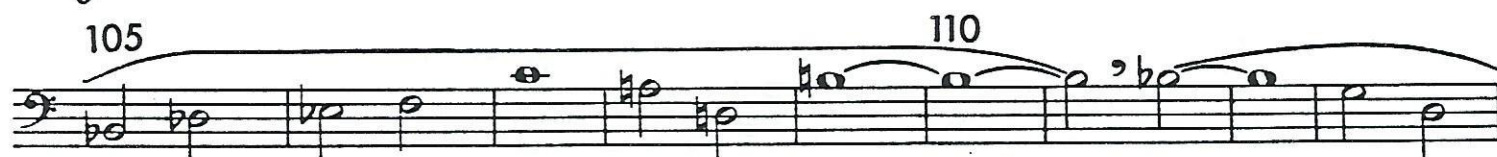
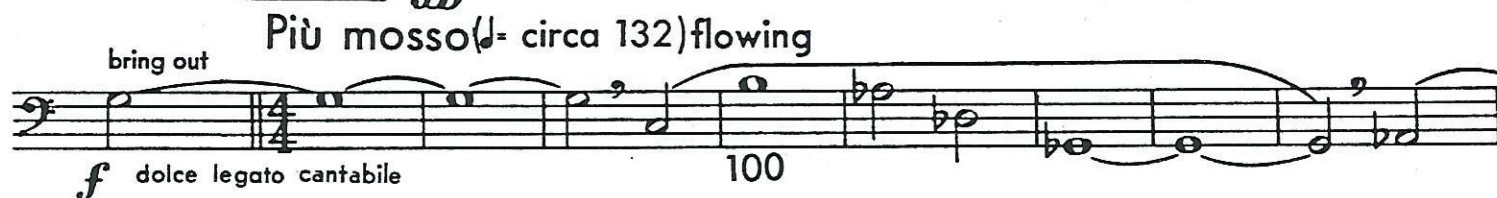
27 *tempo primo* *mf* 3 3 3

31 *f*

35

Euphonium

START HERE quarter = 108



S
T
O
P

molto stacc. e leggiero

8 *tr* *ff* *pp* *non cresc.* *cresc.* *mp* *mf* *f*

9 *mf*

10 *mp* *f*

mp *mf* *3*

11 *p* *ff*

p *ff*

12 *p* *ff*

f(only)

ff *ff dolce* *espressivo grazioso legatissimo* *sff* *sff*

Nº 2. JASPER'S DANCE

Andante espressivo (♩ = 56)

17 *mf* *mf* *p* *1* *mp molto espress.*

2 *cresc. e incalzando* *ff* *largamente* *dim.*

1 3